



Company Profile

Bina Swadaya Konsultan



Member of  TBS
TRUUS BINA SWADAYA

2023

About

Bina Swadaya Konsultan

Bina Swadaya Konsultan (BSK) is the implementing unit of the Bina Swadaya Foundation and is also part of the Trubus Bina Swadaya Group (TBS), which is engaged in community empowerment through various social entrepreneurship activities in various sectors.

BSK was formed because of the enthusiasm to spread the Bina Swadaya spirit through consulting services, training, and joint research with partners from the government, BUMN, international institutions, universities, and the private sector.



Email

bswadaya@bsk.co.id

Member of



Historical Year's Journey

1983 – 1991: BSK Consultation activities started

- Cooperation with BKKBN in the Acceptor Group Income Increase project (1983–1991) funded by the Kingdom of the Netherlands
- Initial cooperation assisted 300 groups, developed by BKKBN, to become 400,000 Self-Help Groups

1986 – 1998: With Ford Foundation

- Social forestry program in West Java Unit III, Central Java Unit I, and East Java Unit II
- Successfully developed 9,000,000 KSM around forest areas with savings and loan development activities, productive businesses, and forest conservation

1992 – 1997: Tabang Division – Bina Swadaya Foundation

1998 – 2002: DPK (Ministry of Self-Reliance Development)

- Department of Self-Reliance Development, Bina Swadaya Foundation
- In January 1998, DPK changed its name to the Consultation Directorate of Bina Swadaya

2003: The establishment of PT. Bina Swadaya Konsultan

- BSK has had the status of a PT legal entity since January 1, 2003
- January 1, 2008 ex BSK and ex-Pusdiklat joined PT BSK
- January 1, 2019, PT BSK under the responsibility of PT Trubus Swadaya Utama (Holding)
- In February 2020, PT BSK joined the mentoring, training, and research program (Trubus Bina Swadaya)



Email

bswadaya@bsk.co.id

Member of



Historical Record

Bina Swadaya Konsultan (BSK) is a program of the Trubus Bina Swadaya (TBS) Group, namely the Bina Swadaya Foundation, a national consulting service company engaged in community empowerment with main services in the form of research, training, and mentoring activities in the tourism sector. This company was formed with the passion of disseminating Bina Swadaya's experience to other parties who have an interest in community empowerment activities.

Consultation activities at this institution have started since 1983, namely through cooperation with BKKBN in the Acceptor Group Income Increase Project (1983-1991) funded by the Kingdom of the Netherlands. At first, the collaboration assisted around 300 groups, then the BKKBN succeeded in developing it into more than 400,000 self-help groups (KSM). Furthermore, with the Ministry of Forestry (Perum Perhutani) in the Social Forestry Program (1986–1998), which was funded by the Ford Foundation, around 9,000 KSMs were successfully developed by members of village communities around forest areas with activities to develop savings and loans, productive businesses, and forest conservation.



Email

bswadaya@bsk.co.id

Member of



In the clean water, sanitation, and health sectors,

consultancy activities began through the Social Marketing Program, Sanitation, and Clean Water Projects in collaboration with the Ministry of Public Works (Ditjen Cipta Karya) in 1991-1993, with funding from UNDP.

Furthermore, in collaboration with the Ministry of Health funded by the World Bank, carried out consultancy activities for the Water Supply and Sanitation Project for Low-Income Communities (WSSPLIC).



Bina Swadaya Consultants are involved in a number of projects related to the sanitation, clean water and hygiene sectors, including: Outcome Monitoring Study WSLIC-2 (Second Water and Sanitation for Low Income Communities) in East Java, NTB, West Sumatra, South Sumatra; Training for Community Facilitator Team (CFT) WSLIC-2 West Java Region; CFT Training Kalimantan Package of CWSHP; Empowering of Groups of Water and Sanitation Infrastructure Management Institution Post Construction WSLIC-2 in East Java; Refreshing for CFT and Orientation of MPA/PHAST for DMPU and PMC; Training for CFT East Java 1 Region WSLIC-2 Project in Malang, East Java; Orientation of MPA/PHAST for TKC WSLIC-2; Clean Water Facilities Recovery in West Sumatra; Post Construction Census and Capacity Building – WSLIC 2 Package H1 in South Sumatra, West Sumatra, and West Nusa Tenggara; Consultancy Services for Community Based Total Sanitation (WSLIC-2 Project Package G) in South Sumatra, Bangka Belitung, West Java, South Sulawesi, West Sulawesi and NTB; and Community Water Services and Health Project (CWSHP) Regional Support Team Jambi in Batanghari, Sarolangun, Muara Bungo, Muaro Jambi and Tanjung Jabung Barat Districts; Event Organizing Services for Supply Chain and Business Development Training.

(Sanitation Entrepreneur Training) - IDA Credit 4204-ID, Pamsimas in August - December 2013 in the Provinces of West Java, Central Java, East Java, West Sumatra, Riau, South Sumatra, Banten, South Kalimantan, East Nusa Tenggara, Central Sulawesi, North Sulawesi, West Sulawesi, Gorontalo and North Maluku, etc.



Email

bswadaya@bsk.co.id

Member of



In this project, BSK served as a management consultant for WSSPLIC implementation in East Nusa Tenggara Province in 1993-1998, and a consultant for several training activities for WSLIC implementation (WSSPLIC phase II) in six provinces (East Java, West Nusa Tenggara, West Sumatra, South Sumatra, West Java, and South Sulawesi).

In the agricultural sector, BSK has played many roles in strengthening the concepts of empowering farming communities. This participation can be seen in the Income Increase Project for Small Farmers and Fishermen (P4K) in collaboration with Human Resource Development - Ministry of Agriculture (Ministry of Agriculture), Project for Development of Smallholder Rubber Processing Units (PUPKR) in collaboration with the Directorate General of Plantations - Ministry of Agriculture, Farming Business Development Project and Livestock in Eastern Indonesia (PUTKATI) in collaboration with the Directorate General of Animal Husbandry - Ministry of Agriculture, and the Participatory Integrated Development in Rainfed Area (PIDRA) Project in collaboration with the NTT Provincial Guidance and Food Security Agency.



Email

bswadaya@bsk.co.id

Member of



In the disaster sector, Bina Swadaya Konsultan also has experience in facilitating the improvement and strengthening of community empowerment for disaster victims (tsunami and earthquakes) and disaster risk reduction (DRR). This is reflected in handling a number of disaster projects, such as: Technical Assistance & Capacity Building for Micro and Small Enterprises in Yogyakarta and Central Java after DIY & Central Java Earthquake (in collaboration with IOM); Earthquake and Tsunami Emergency Supporting Projects (Agriculture, Irrigation, and Fisheries Components – ETESP Package 16-17 ADB) in NAD – Nias; Capacity Building Disaster Risk Reduction in Yogyakarta and Central Java (in collaboration with CORDAID), The Consulting Services for Rehabilitation and Reconstruction for Population Housing Stage I – II in Consequence of Earthquake Natural Disaster in Bengkulu (in collaboration with the Regional Government of Bengkulu Province); Community Learning Center Development Program – Community Economic Recovery through Agriculture Rehabilitation in Aceh Barat District NAD (in collaboration with Newmont); ETESP Package 23 – Spatial Planning & Environment – Village Planning (in collaboration with ADB); Community Empowerment on Micro-Scale Industry Recovery, Post Earthquake, Post Earthquake in Yogyakarta and Central Java (in collaboration with JICA); DRR Program in NTT (in collaboration with CORDAID); Sulawesi Emergency Response and Capacity Building (ERCB) Program in Donggala District - Central Sulawesi (Phase 3 Palu) (in collaboration with ERCB Network-LPTP); Phase 2 of the Livelihood Program in Sigi District, Central Sulawesi (in collaboration with PARC Interpeoples' Cooperation (PARCIC).



Email

bswadaya@bsk.co.id

Member of



In the tourism sector, BSK has experience working with the Ministry of Tourism and Creative Economy of the Republic of Indonesia in handling the Tourism Awareness Review program in the Lake Toba-North Sumatra, Borobudur-Yogyakarta-Prambanan, and Lombok NTB regions. The program will be implemented in October 2020 - May 2021.

In addition to the sectors mentioned above, to date, BSK has also participated in community empowerment activities in mining, education, settlement, industrial, and other sectors. Empowerment activities are carried out in urban, rural, and transmigration areas.

BSK also has experience working with the Private Sector (the company) and the Foundation in handling CSR-Community Development work, including:

- **PT. HM Sampoerna Tbk** in the Jakarta area in the Ciliwung Caring Community Empowerment Program that is Independent and Sustainable through Acceleration of Economic, Environmental, and Educational Activities;
- **The Coca-Cola Indonesia Foundation** in the Community-Based Waste Management Program through Garbage Banks in the Depok area of West Java, East Jakarta, and South Jakarta DKI Jakarta;
- **Chevron** in North Penajam Paser & Kutai Kartanegara Regencies-East Kalimantan in the Coastal Community Empowerment Program;
- **TOTAL Indonesia** in Muara Jawa, Delta Mahakam-Kaltim in Monev of Assisted Groups;
- **BP Rio Tinto** in East Kutai, East Kalimantan in the Community Investment Program-Natural Resource Management and Community Livelihood;
- **BHP Billiton** in East Kalimantan and Central Kalimantan in Community Economic Assistance and Management of Clean Water Sanitation
- **ADARO** in South Kalimantan, in Community Empowerment Training for Adaro Comdev Staff;



Email

bswadaya@bsk.co.id

Member of



- **PT. Berau Coal** in East Kalimantan in KSM Institutional Training and Assistance Around Mining Areas;
- **Danone** in Klaten and Boyolali Regencies of Central Java in Institutional Training and Assistance for Independent Business Services, Business Units, and Microfinance Units;
- **PT. Weda Bay Nickel** in Central Halmahera and East Halmahera-North Maluku Regencies in the Community Livelihood Empowerment Program;
- **Amungme Kamoro Community Development Institute (LPMak)—PT. Freeport Indonesia** in Mimika, West Papua in the Economic & Community Institutional Training and Assistance;
- **BP Berau** in Teluk Bintuni Regency, West Papua, in Assistance activities for Improving People's Standard of Living;
- **Exxon Mobil** in Bojonegoro and Tuban Regencies, East Java, in the Community Livelihood Improvement Program;
- **Newmont** in Meulaboh Aceh in the Learning Center Development Program for Community Economic Recovery;
- **PT. Vale Indonesia** (formerly PT. INCO) in East Luwu district-South Sulawesi in Retirement Preparation Training for PT. Vale Indonesia and in Dompu Regency, NTB, in Business Group Assistance;
- **PT Adaro Indonesia** in Tabalong and Balangan Regencies, South Kalimantan, in Assisting Business Institutions
- **Donggi Senoro** LNG in Banggai Regency, Central Sulawesi, in Community Economic Empowerment;
- **Adaro** Metcoal in Murung Raya Regency, Central Kalimantan, and Mahakam Ulu Regency, South Kalimantan, in the Study of Social Mapping and Preparation of KDP Master Plans in 7 PKP2B Areas
- **PT. Marunda Graha** Mineral in Murung Raya Regency and South Barito Regency, Central Kalimantan, in the Study of Social Mapping and Preparation of the Master Plan Document for the Community Development and Empowerment Program
- **Indexim Coalindo** in East Kutai Regency, East Kalimantan, in the work of Assisting Groups of Pond Fishermen and SMEs
- **PT. Bhumi Jati Power** in Jepara Regency, Central Java, in the work of the Community Empowerment Program through the Development of Community Cattle Farms
- **PT. Indexim Coalindo** in East Kutai Regency, East Kalimantan, in the work of the "Potential Economic Empowerment Program for Communities in the Fisheries and Agriculture Sector.



Email

bswadaya@bsk.co.id

Member of



- **PT. Bhumi Jati Power** in Jepara Regency, Central Java in the work of the Community Empowerment Program through the Development of Communal Cattle Farms.
- **PT. Indexim Coalindo** in East Kutai Regency, East Kalimantan in the work of "Potential Economic Empowerment Program for Communities in the Fisheries and Agriculture Sector.
- **PT. Agincourt Resources** in South Tapanuli Regency, North Sumatra, in the work "Sustainable Local Economic Development and Study of Village Superior Products".
- **PT. Multi Infrastructure** Facilities in Konawe Regency, Southeast Sulawesi, in the work "Devotional Village Assistance for Country III".

BSK also has experience working with donor agencies and international NGOs on several programs, as follows:

- World Bank. Facilitation of PNP Studies in West Sumatra, East Java, South Kalimantan, Southeast Sulawesi, and NTT, September 2009–March 2010 period.
- World Bank. RLA (Legal Aid Revitalization) Training Provider Phase II, Justice for The Poor (Paralegal) Program in Jakarta, Lampung, West Java, and NTB, and the period May 2009–April 2010.
- Human Rights and Gender Capacity Building Exposure Training and Visits to Indonesia in Jakarta and West Java in Collaboration with the Swedish Committee for Afghanistan (SCA), November–December 2019 period.
- Civil Society Capacity Building Study Program for SCA Staff in Jakarta and Cirebon, in collaboration with SCA, January 2020 period.
- Technical Support to the Village Innovation Project (VIP) on Knowledge Capturing of Village Innovation "in Central Lombok and North Lombok, West Nusa Tenggara, Maros, and Sinjai, and South Sulawesi districts, in collaboration with the World Bank, July–August 2017 period.
- ADB Manila. Earthquake and Tsunami Emergency Assistance Project (Agriculture, Fisheries, and Irrigation Components): ETESP Packages 16 and 17 in NAD and Nias, North Sumatra Period: October 2005–June 2008.
- IOM Yogyakarta. Technical Assistance & Capacity Building: Microfinance Training and Technical Training for Boyolali - Sukoharjo District (IOM Ref. No. IOM / WB-PPC-018), period December 2010 - June 2011



Email

bswadaya@bsk.co.id

Member of



- JICA Indonesia: Community Empowerment in Micro-Scale Industry Recovery, Post-Earthquake in Bantul Yogyakarta and Klaten Regencies, Central Java, period July 2006 - March 2007
- Strengthening the Capacity of Local Government Institutions and Small and Medium Enterprises for Ecotourism Development in Indonesia - EU-Indonesia Cooperation. Locations: Jakarta, Medan, Bogor, Lombok and Tanah Toraja.
- ISEA in the Jakarta area in the work of Women's Economic Empowerment Transformation Initiatives in Agriculture Value Chain", period December 2021 - April 2023
- The Danish SEGES Consortium in Pasuruan Regency, East Java in the work "Organic Dairy Milk Management, period October 2021 - February 2022.

As part of the Bina Swadaya Foundation which is a non-governmental organization that manages and develops service activities that are oriented towards improving the welfare and independence of the community, especially the grassroots, all activity units of the Bina Swadaya Foundation refer to the vision, mission and strategy of the main institution.

By adhering to the belief that the poor are not the have not, but they are the have little, the development of self-help groups is believed by the Bina Swadaya Foundation as a powerful strategy to overcome poverty. Individually, they find it difficult to overcome the problems they face, but together in a place they trust, they will be much more capable.

Starting from direct assistance activities for small communities with a self-help group (KSM) development approach, the Bina Swadaya Foundation, which has now entered its fourth decade and is supported by 500 employees, through the Trubus Bina Swadaya (TBS) Group has developed and given birth to various activities that grouped into 5 programs, namely Agribusiness & Stores; Microfinance; Knowledge Management and Publishing; Training, Mentoring, and Research; Facilities and Services and 3 Management Divisions: Human Resources and Personnel; Finance and Compliance; Development and Programs.



Email

bswadaya@bsk.co.id

Member of



Vision

Become a consulting institution that is recognized as superior in Community Empowerment Development - Social Entrepreneurship.

Mission

- Facilitate the community to grow independence based on democracy, transparency, accountability, and gender equality sustainably.
- Develop partnerships with various parties to increase empowerment.
- Improving the quality of innovative and aspirational services as a Center of Expertise.
- Influence development policies so that they are more pro-poor and marginalized people.
- Sustainably expanding the range of services.



Email

bswadaya@bsk.co.id

Member of



Goal

Contributing to improving community welfare with the principles of participation, openness, independence, and sustainability

Strategy

- Formation and strengthening of Self-Help Groups towards independence in the material, managerial and intellectual aspects.
- Strengthening the local economy that is specific and based on market needs.
- Building the involvement of stakeholders to expand their roles in various poverty reduction programs.
- Develop a communication strategy with various relevant parties in social entrepreneurship activities.



Email

bswadaya@bsk.co.id

Member of



Approach Program

Asistance

Mentoring activities are service activities that are implemented in the form of placing experts to field workers (facilitators/community assistants) in the target area. The aim is to increase the capacity of local resources (apparatus/staff) in government agencies/BUMN, private companies, international institutions, and NGOs so that in turn they can become community development workers who can be motivators as well as facilitators/assistant of self-help groups that be grown while facilitating them to become independent groups.

Activities carried out include:

- Coaching Model Development
- Community Organizing/Preparation
- Capital Development
- Application of Appropriate Technology
- Development of the Role of Women
- Communication Media Development
- Management of poultry farming
- Management of organic dairy cows



Email

bswadaya@bsk.co.id

Member of



Training

Training activities are carried out in the form of training services to work partners regarding an understanding of community development. Meanwhile, training at the community level aims to facilitate the community to have a good understanding and skills to build self-sufficiency. The methodology used in the training is Education for Adults (POD). Here, participants are facilitated to enter the stage of experiencing - uncovering - analyzing - discovering principles, and applying, them so that participants will play an active role in each discussion session of the training material.

The training activities carried out include:

1. Module Development (Curriculum, Guidelines, Materials/Reading Materials)
2. Training for Field Officers, Managers, and Government Officials (in-house training)
3. Organizing Workshops, etc.



Research

Research activities are a service to partners to obtain research results that are in favor of marginal/grass root communities, among others to be used as material for preparing project designs and program plans, preparing the necessary guidelines, knowing the impacts of activities/projects, and so on. In general, the research conducted is directed at action research, so that the target community can immediately feel the benefits.

Research activities carried out include:

- Training Needs Assessment Study
- Assistance Need Assessment Study
- Applied Research, Project Monitoring, and Evaluation
- Action research (action research) in testing, discovering, and creating new actions and their development
- Impact Studies, etc

In carrying out consultancy services (technical assistance), especially in the regions, SwadayaConsultant always prioritizes cooperation/partnership with local (local) institutions or individuals. This is intended as an effort to transfer knowledge in line with the mission of Strengthening the capacity of empowering actors.



Email

bswadaya@bsk.co.id

Member of



Experts

Bina Swadaya Konsultan's supporting experts consist of 14 organic workers (permanent employees) and more than 100 non-organic workers (contract employees and association members). The competence of consulting services related to the following areas of expertise:

1. Community economic/livelihood development
2. Development of public health, clean water, and sanitation
3. Development of gender equality
4. Development of environmental conservation
5. Development of microfinance
6. Development of social entrepreneurship
7. Development of agribusiness
8. Disaster Risk Reduction (DRR) & Climate Change Adaptation (CCA)



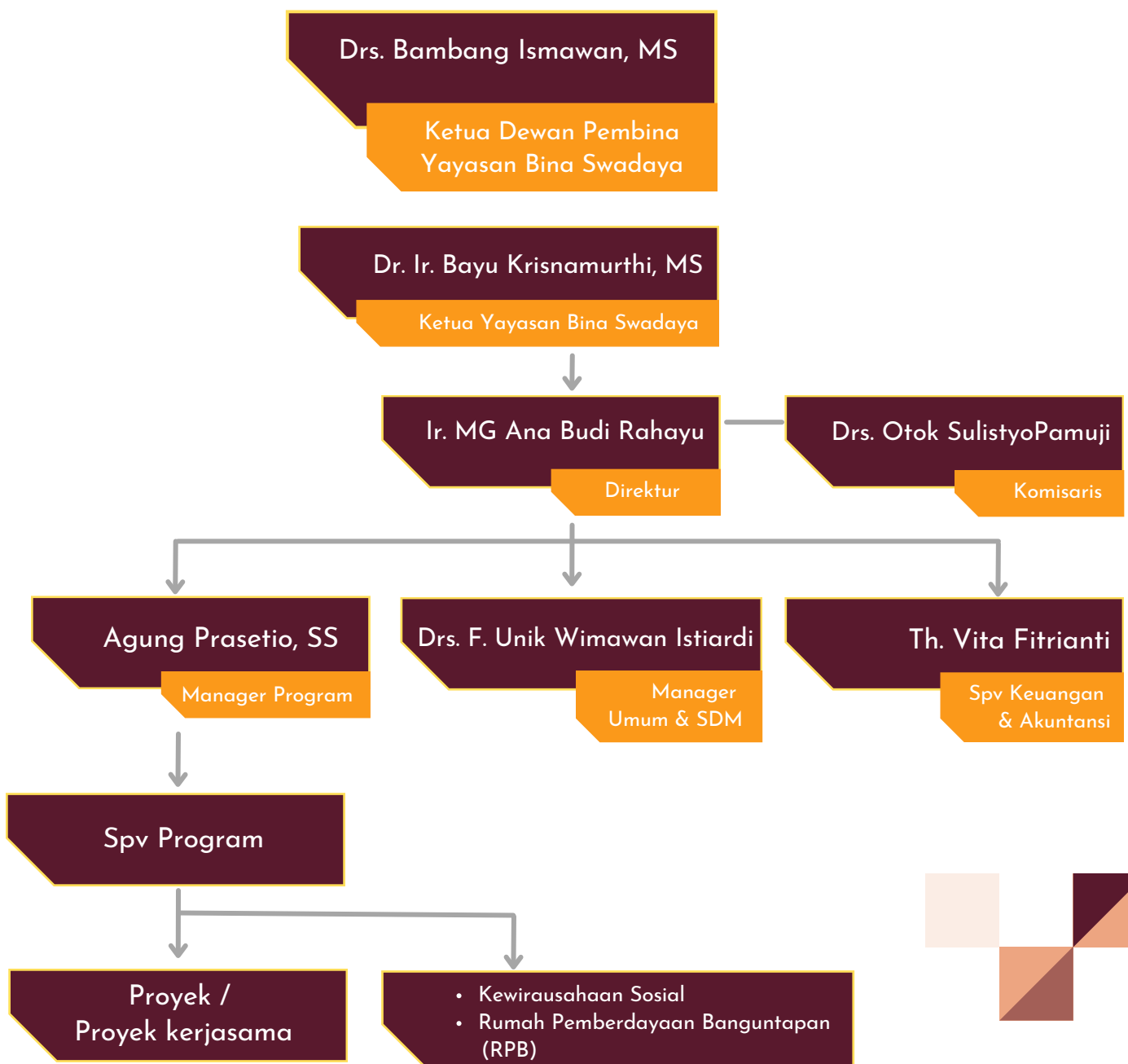
Email

bswadaya@bsk.co.id

Member of



Organizational structure and Management



Client



Program of the last two years

Institution	Location	Activity
Ford Foundation	DKI Jakarta	Research on Making a Roadmap for Economic Recovery that is Equitable and Sustainable <ul style="list-style-type: none"> Multi-sectoral research to create a just and sustainable economic recovery roadmap.
Kementerian Pariwisata RI	Borobudur, Prambanan, Danau Toba, Lombok	Travel Aware Review Evaluation of the Tourism Awareness Program and the Community Empowerment Program as well as Designing a Tourism Awareness Program / Community Empowerment Program that is more in line with current developments in society.
Kementerian Sosial RI	DKI Jakarta	Implementation of Business Mentoring Incubation Implementation of joint activities in the field of business mentoring for PKH Graduation beneficiary families (KPM) which are the target of Social Entrepreneurship.
ISEA	DKI Jakarta	Women's Economic Empowerment Transformational Initiatives in Agricultural Value Chains (WEE Train in AVCS) <ul style="list-style-type: none"> Formulate an action plan based on the actions of the BTP WEE in the AVC balanced scorecard. Assisting agribusiness companies and their value chain communities to implement action plans with an emphasis on gender equality. Contributing to the WE LIVE FOOD and Multi-Stakeholder platforms to promote gender equality, women's economic empowerment, and the transformation of sustainable partnerships.



Institution	Location	Activity
SEGES	Pasuruan, Nongkojajar	Pilot Market Driven Organic Dairy Production in Indonesia Organic Dairy Milk Development Program
Sumbawa Timur Mining	Dompu	Micro Business Group Development Program, Small and Medium Society of 2022 <ul style="list-style-type: none"> Continuing administrative assistance to community small business groups. Introducing and teaching business groups how to increase the yield and quality of products that have selling points and are accepted by the market. Improving knowledge, skills, attitudes, small business groups through mentoring and training on the importance of managing administration, financial records, and strengthening groups. Provide packaging quality assistance so that it is accepted in the market and gain marketing knowledge so that it can be reached more widely.
NLR	Medan, Ruteng	Business Group Project Entrepreneurial Module Development and Inclusive Business (KUBIK) <ul style="list-style-type: none"> Develop Entrepreneurial Module for Business and Business Group Projects (KUBIK).
OXFAM	Malaka, Timur Tengah Selatan, NTT	Consultant for Community Agriculture Improvement <ul style="list-style-type: none"> Conduct Desk Study Conducting knowledge sharing/learning activities about the best planting mechanisms, the impact of climate change and disasters on agriculture, and their solutions to community groups in 3 (three) villages, namely Motaulun Village (Malaka), Meusin Village, and Bena Village (TTS) through FGDs and classes field. Conduct knowledge-sharing activities on climate change and the impact of disasters on CIS Timor staff. Preparation of written reports.



Email

bswadaya@bsk.co.id

Member of



Institution	Location	Activity
WARSI	Jambi	<p>Mapping Value Chains and Institutions</p> <ul style="list-style-type: none"> • Mapping of value chains and institutions involved in NTFP management in the Bukit Tigapuluh landscape. • Analyze the gaps and potential risks of NTFP management in the Bukit Tigapuluh landscape.
Toba Pulp Lestari	Riau	<p>Study of the Community Standard of Living Improvement Program in 10 Villages Around the Operational Area of PT. RAPP</p> <ul style="list-style-type: none"> • Study program in 10 villages. <p>Extreme Poverty Alleviation Program Through Laying Hen Cultivation</p> <ul style="list-style-type: none"> • Mapping the types of products that have the potential to be developed, mapping locations and business actors. • Identify business processes in 1 business cycle. • Identify required permits and certifications. • Mapping market potential and marketing methods. • Mapping stakeholders involved in business activities. • Mapping potential risks and their mitigation plans. • Provision of sustainable local economic development programs (empowerment) and studies of village superior products.
Agincourt	Tapanuli Selatan	<p>Village Leading Product Study</p> <ul style="list-style-type: none"> • Mapping the types of products that have the potential to be developed, mapping locations and business actors. • Identify business processes in 1 business cycle. • Identify required permits and certifications. • Mapping market potential and marketing methods. • Mapping stakeholders involved in business activities. • Mapping potential risks and their mitigation plans. • Provision of sustainable local economic development programs (empowerment) and studies of village superior products.



Institution	Location	Activity
Agincourt	Tapanuli Selatan	<p>Sustainable Local Economic Development Program (Empowerment)</p> <ul style="list-style-type: none"> • Strengthening the institutional capacity of six cooperatives and groups through coaching and training in organizational management, administration, financial analysis and review of institutional regulations • Develop the group's leading commodities through strategic planning, preparation of business plans, business development, strengthening capital, and developing marketing networks. • Improvement of skills in community-based agriculture & agribusiness, fisheries, and animal husbandry. • Increasing the financial management and organizational capabilities of the target group. • Developing a system, model of training and fostering capacity building according to the needs of the target group.



Social Entrepreneurship

The importance of assistance to support the community's economy is also carried out by BSK in collaboration with mushroom farmers in Jonggol, Bogor, and the indigenous Baduy community, Banten. This was also carried out to support the acceleration of achieving the National SDGs goals.

Jonggol Pintar Integrated Inclusive Program



The Integrated Inclusive Program "Jonggol Pintar" is a direct assistance program for Bina Self-Help Consultants (BSK). Through the Jonggol Pintar program, Bina Swadaya Consultants develop the economy, education, health, and disaster. Bina Swadaya Consultants through the Jonggol Pintar program open opportunities for cooperation in developing the oyster mushroom business. The hope is that it can develop the community's economy which will be continued with the Baglog investment program and mushroom plasma. Jonggol was chosen as the location for the development of this oyster mushroom based on a request from the Ministry of Villages, Development of Disadvantaged Regions, and Transmigration. In the middle of his journey, BSK met Asep, who had already started an oyster mushroom business. Even though they failed once, the Jonggol Pintar Team convinced Asep to restart the oyster mushroom cultivation business.



Email

bswadaya@bsk.co.id

Member of



Semar Jonggol mushroom Develop the Economy of the Residents of Sukadamai Village



"I and the other mothers here are very grateful to be able to join the Semar Jonggol Mushroom Group, which can provide additional income to meet our family's needs. We can produce 10 thousand backlogs so that each member earns IDR 150 thousand. This income will increase if the number of mushroom orders is greater."

Yuyun
(Member of the Semar Jonggol Mushroom Group)




The Semar Jonggol Mushroom Group, led by Asep Mardi and in partnership with Bina Swadaya Consultants (BSK), focuses on cultivating oyster mushrooms in Cimenyan Village, Sukadamai Village, Jonggol, West Java. The group of 11 housewives is capable of producing 10 thousand backlogs per day. The backlog production activities did not interfere with the household activities of the mothers in this group.

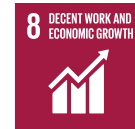
"If there is an order, every 6 a.m., we put the planting media into the backlog, then continue until 9 a.m. to close the backlog using a pipe ring after pressing. If it's done in the morning, the process doesn't take long, at most one hour, then it's continued in the afternoon to close the backlog, the process takes an hour and a half at most," said Yuyun.



Email
bswadaya@bsk.co.id

Member of 

Tenun dan Madu Baduy Gajeboh



- Bina Swadaya Consultant (BSK) has contributed to conserving forest honey by driving the economy of the Baduy people in Lebak Regency, Banten.
- Honey from Gajeboh village/hamlet which is produced in the forests of the Baduy tribe is an area that is still natural by maintaining noble traditions. Areas that are still natural and environmentally protected are believed to have an impact on the quality of pure and higher-quality honey.
- Together with Mang Ucal, one of the forest beekeepers from Gajeboh village, BSK is believed to be able to protect and contribute to the welfare of the Baduy people. Forest honey from the Baduy tribe has its uniqueness or local wisdom from sustainable harvesting methods and sales permits that are limited to a few people.
- Sustainable harvesting itself is a harvesting system that only takes part of the honey and leaves a little for the tillers or 25% of the head of the honey that must be left. This is done to maintain the sustainability of Baduy forest honey production.
- Through this collaboration, every month Mang Ucal produces and sends more than 100 kilograms of honey to BSK. Furthermore, BSK through the social entrepreneurship unit carried out marketing by creating the Gajeboh Honey branding.



Email
bswadaya@bsk.co.id

Member of  TBS
TRUSTED BUSINESS

Testimony



"The assistance provided by the Bina Swadaya Konsultan team for Community Mobilization activities in Depok is very good. The BSK team assists the empowerment process directly to the community. The processes and work methods are shown to be systematic and coordinated."

Herawati
Kasubdit Pemberdayaan Masyarakat
Kementerian Kesehatan RI



"Thanks to guidance from Bina Swadaya, a lot of progress has occurred for KPM. This collaboration is very good. We hope that in the future we can work more intensely with Bina Swadaya to create empowerment models that can be implemented according to existing platforms and budget models. at the Ministry of Social Affairs."

Edi Suharto
Direktur Jenderal Pemberdayaan Sosial Kementerian Sosial RI



"Now I take more honey, a maximum of 200 kg. I get the proceeds from the sale of honey which is quite advanced so I can use it for farming capital and help people. Thank you for being accepted by Bina Swadaya Konsultan."

Mang Uncal
Peternak / Petani Madu Baduy



Publication Experience

Some of the publications published based on Bina Swadaya Konsultan's experience in handling several community empowerment works are as follows:

- Community Development in the Social Forestry Program/Forest Village Community Development (Training Guide). Published in collaboration with Bina Swadaya – Perum Perhutani – The Ford Foundation, Jakarta, 1996.
- Experiences Assisting Forest Farmers: The Case of Social Forestry in Java. Published by Pemebar Swadaya for the Bina Swadaya Foundation in collaboration with The Ford Foundation, Jakarta, 2001.
- Small Irrigation, Women and Household Farmers – The Impact of Pumping in the Haurgeulis Case. Published by the Directorate of Consultancy Development Bina Swadaya, Jakarta, 2001
- Educational Books for Grassroots People on Globalization and Its Impacts – The Pest Is Called Globalization. Published by Bina Swadaya, Jakarta, 2004.
- IOM Partner's Handbook I: Community Facilitation Guidelines – Participatory Planning and NGO Management Processes, For NGOs and Communities in Southeast Aceh and Gayo Lues. Published by Bina Swadaya, Jakarta, 2007.
- IOM Partner's Handbook II: Assistance and KSM Training Manual, Support for Conflict-Affected Community Project (SCACP). Published by Bina Swadaya, Jakarta, 2009.
- Post-Disaster Recovery (Reporting from Empowerment Areas) – Learning from Bina Swadaya Facilitation in ETESP (Earthquake and Tsunami Emergency Support Project) – ADB. Published by Bina Swadaya, Jakarta, 2009.
- Tracing the Traces of Disaster Risk Reduction with Communities – Lessons from Mapping Disaster Risk Reduction. Published by the Bina Swadaya Foundation, Jakarta, 2009.



Email

bswadaya@bsk.co.id

Member of



- IOM Partner's Handbook III: Guide to NGO Management, Support for Conflict-Affected Communities Project (SCACP). Published by Bina Swadaya, Jakarta, September 2009.
- Warta DRR (Disaster Risk Reduction) Bulletin, Edition 1 -3, Collaboration between CORDAID and Bina Swadaya. Published by Bina Swadaya Konsultan, Jakarta, 2009 – 2010.
- Empowerment Information Bulletin “Community Investment Program” in Kaliorang, Kutai Regency, East Kalimantan, Issue 1 (November 2008) – IX (May 2011). Collaboration between Bina Swadaya Consultants and PT. Rio Tinto Indonesia and PT. Jasatama Petroindo (British Petroleum). Published by Bina Swadaya Konsultan, East Kutai, East Kalimantan, 2010.
- Managing Asa from the Ruins of the Earthquake: Experience Assisting Micro Industry Actors in Yogyakarta Earthquake Victims. Collaboration between Bina Swadaya and JICA. Published by Bina Swadaya, Jakarta
- Garbage Brings Blessings: A Cultural Portrait of Environmentally Concerned Communities. Collaboration between Bina Swadaya and JICA (Japan International Cooperation Agency). Published by Bina Swadaya Konsultan, Jakarta, May 2010.
- East Nusa Tenggara "Warta DRR" Bulletin, Edition I, CORDAID collaboration with Bina Swadaya Consultants and OISCA NTT. Published by Bina Swadaya Konsultan, Jakarta, May 2011.
- Guidebook "Scavenger Self-help Group Assistance (KSP) - Scavenger Empowerment Program", a collaboration between Bina Swadaya Consultants and Aqua-Danone, Danone-Ecosystem, and ASHOKA. Published by Bina Swadaya Konsultan, Jakarta, May 2011.
- The book “Corporate CSR in Indonesia a la Bina Swadaya”, Consultant Bina Swadaya Team – Marye Agung Kusmagi. Published by Bina Swadaya Konsultan, Jakarta, June 2011.
- The book “Arousing Public Awareness: A Reflection and Lessons – The Process of Studying Integrated Disaster Risk Reduction (DRR) on Climate Change and Ecosystems in South Central Timor District, East Nusa Tenggara. Published by Bina Swadaya Konsultan, Jakarta, July 2014.



Email

bswadaya@bsk.co.id

Member of



- The book "Product Packaging and Business Marketing". Published by Bina Swadaya Konsultan-Muria, Jakarta, 2016.
- The book "Management of Business Finance and Household Economics". Published by Bina Swadaya Konsultan-Muria, Jakarta, 2016.
- Business Licensing. Collaboration between Bina Swadaya Consultants and PT. East Sumbawa Mining. Published by Bina Swadaya Konsultan, Jakarta, 2022.
- Business Financial Management. Cooperation with PT. East Sumbawa Mining and Bina Swadaya Consultants. Published by Bina Swadaya Konsultan, Jakarta, 2022.



Email

bswadaya@bsk.co.id

Member of



Institution Administration Data

PT. Bina Swadaya Konsultan

Address

Jl. Gunung Sahari III/7, Jakarta 10610
Telp. (021) 420 4402, 425 5354
Fax. (021) 420 4404
E-mail : bswadaya@cbn.net.id; bswadaya@bsk.co.id

Correspondence Address

Gedung Grha Bina Swadaya
Jl. Lembah Hijau, RT 1. RW 7, Mekarsari, Cimanggis-Depok 16452
Telp. (021) 87723839; (021) 8772216
Email: bswadaya@cbn.net.id; bswadaya@bsk.co.id

GOVERNMENT RECOMMENDATIONS

Yayasan Bina Swadaya (Lembaga Pemilik)
Dit. Sospol DKI : No. 195/SKT/Y/XI/94
SK Domisili : No. 626/1.756.2/85
Dinas Sosial DKI : No. 0151/JP/BS.III/1990

PT. Bina Swadaya Konsultan

Anggota KADIN : No. 20201.61569-6/29-01-04
Anggota INKINDO : No. 11700/P/2388.DKI
SK Domisili : No. 160/1.824/2008
TDP Perseroan Terbatas : No. 09.05.1.74.46343
SIUP (Besar) : No. 03734/1.824.51



Contact Media Sosial



+62 813-9326-0303



www.bsk.co.id



bswadaya@bsk.co.id



Bina Swadaya Konsultan



[binaswadayakonsultan](https://www.instagram.com/binaswadayakonsultan)



[binaswadayakonsultan](https://www.tiktok.com/@binaswadayakonsultan)



Email

bswadaya@bsk.co.id

Member of

